



Rijksinspectie Digitale Infrastructuur  
Ministerie van Economische Zaken

# EDelivery

Dag van de Interoperabiliteit

Stef Duteweert en Simon Neuteboom



**Simon Neuteboom**  
Nederlands Beppolautoriteit



# Peppol

The future is open



Nederlandse Peppolautoriteit  
*Ministerie van Binnenlandse Zaken en  
Koninkrijksrelaties*



**Stef Duteweert**

Rijksinspectie Digitale Infrastructuur

Voor een veilig verbonden Nederland



# Rijksinspectie Digitale Infrastructuur (RDI)

- Opgericht in 1927
- Eerst onderdeel van PTT, maar na privatisering in 1989 een Rijksdienst
- 500 medewerkers
- Hoofdkantoor in Groningen, tweede kantoor in Amersfoort
- Tevens kantoor in Kralendijk, Bonaire





# Rijksinspectie Digitale Infrastructuur

## Apparatuur

Veilige en betrouwbare apparaten binnen de digitale en analoge infrastructuur



## Digitale Weerbaarheid

Ongestoord en in vertrouwen gebruik maken van de digitale infrastructuur

## Infrastructuur

Vertrouwen op hoogwaardige analoge en digitale infrastructuur

## Toezichthouder op basis van o.a.

- Telecommunicatiewet
- Zorgplicht Telecom Security
- Wbni
- eIDAS
- Europese Cyber Security Act
- Radio Equipment Directive
- EMGrichtlijn
- LVDrichtlijn
- Wet informatieuitwisseling bovengrondse en ondergrondse netten en netwerken (WIBON)
- Metrologiewet
- Cybersecuritywet
- Waarborgwet
- Wet Ruimtevaartactiviteiten
- Wet Digitale Overheid (na inwerkingtreding)





# Agenda

1. eIDAS
2. eDelivery
3. Peppol-afsprakenstelsel
4. Forum





# eIDAS-Algemene doelstelling

- “The eIDAS regulation facilitates **secure cross-border transactions** by establishing a **framework for digital identity and authentication**.
- It aims to create **confidence in electronic interactions** and promote **seamless digital services** in the EU.”



# eIDAS

E-identification

Trust services - general

Trust services – framework for

European Digital identity wallet

E-identification schemes

Qualified

Non-qualified

E-signatures

E-seals

E-time stamps

E-documents

E-registered delivery services

Certificate services for website authentication

E-archiving

E-attestation of attributes

E-ledgers

E-signature creation devices

E-seal creation devices



# eIDAS

E-  
identifi-  
cation

Trust  
services  
-  
general

## Trust services – framework for

Europea  
n Digital  
identity  
wallet

E-  
identific  
ation  
scheme  
s

Qualifie  
d

Non-  
qualifie  
d

E-  
signatures

E-seals

E-time  
stamps

E-  
documents

E-  
registered  
delivery  
services

Certificate  
services for  
website  
authenti-  
cation

E-archiving

E-  
attestation  
of  
attributes

E-ledgers

E-signature  
creation  
devices

E-seal  
creation  
devices



# eIDAS-~~Electroni~~Registered Delivery Services (ERDS)

- Elektronisch data uitwisselen tussen derden
- Bewijs van verzenden/ontvangen
- Beschermt tegen:
  - Verlies
  - Diefstal
  - Schade
  - Ongeautoriseerde wijzigingen

Data wordt betrouwbaar geacht



# eIDAS enablers (bouwstenen) vanuit DIGITAL Europe programme



## eDelivery

Exchange electronic data and documents in an interoperable and secure way



## eID

Offer services capable of electronically identifying users from all across Europe



## eInvoicing

Send and receive electronic invoices in line with the European Directive



## eSignature

Create and verify electronic, paperless signatures



## Once-Only Technical System (OOTS)

Reduce administrative burden on citizens and businesses

[APPLY FOR GRANTS](#)

“Our eIDAS enablers give you access to free tools and support to help you **build digital services in line with the eIDAS regulation.**”



# eDelivery ~~Van ERDS naar~~ eDelivery

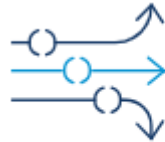
Exchange documents and data securely and reliably



Interoperability



Scalability and performance



Flexible and configurable



Security and accountability

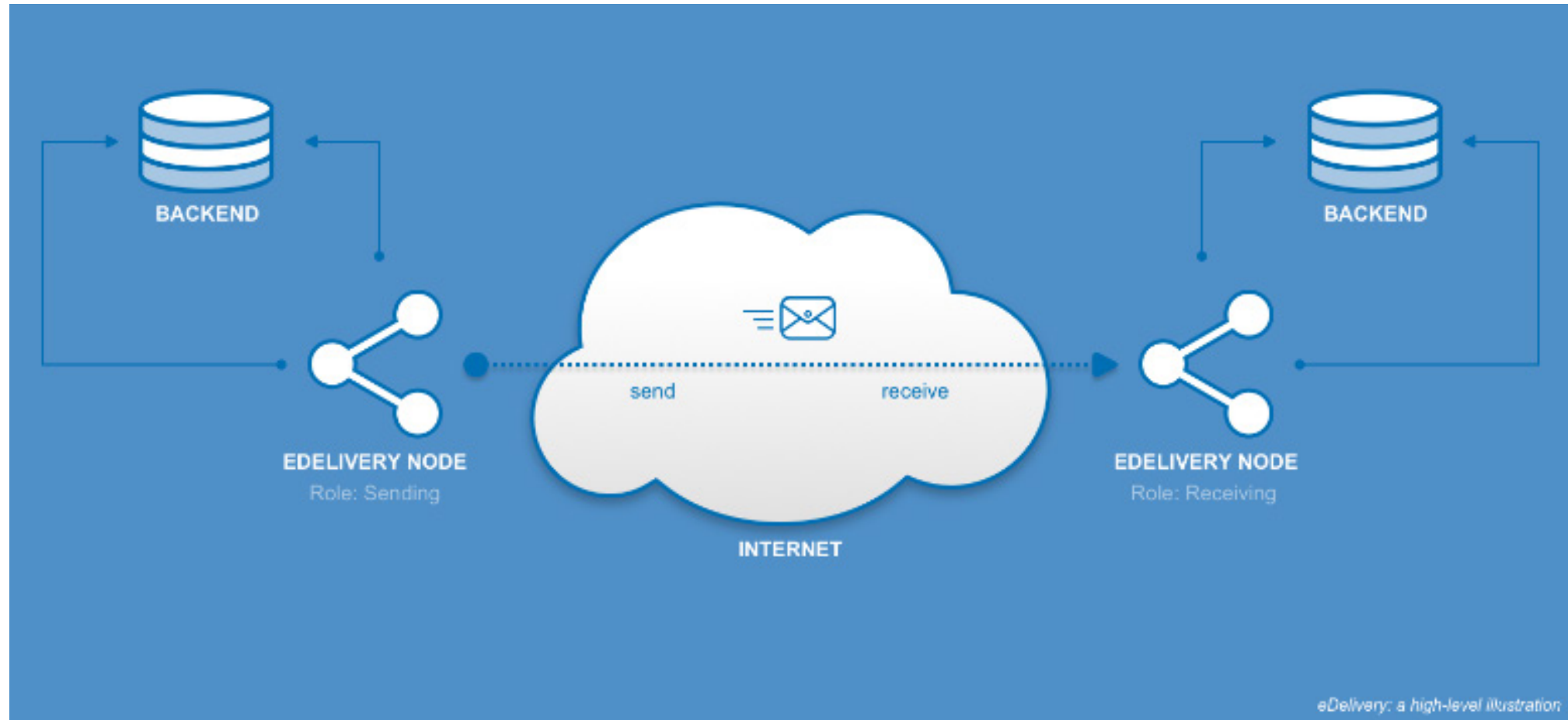


Vendor and platform agnostic

ERDS

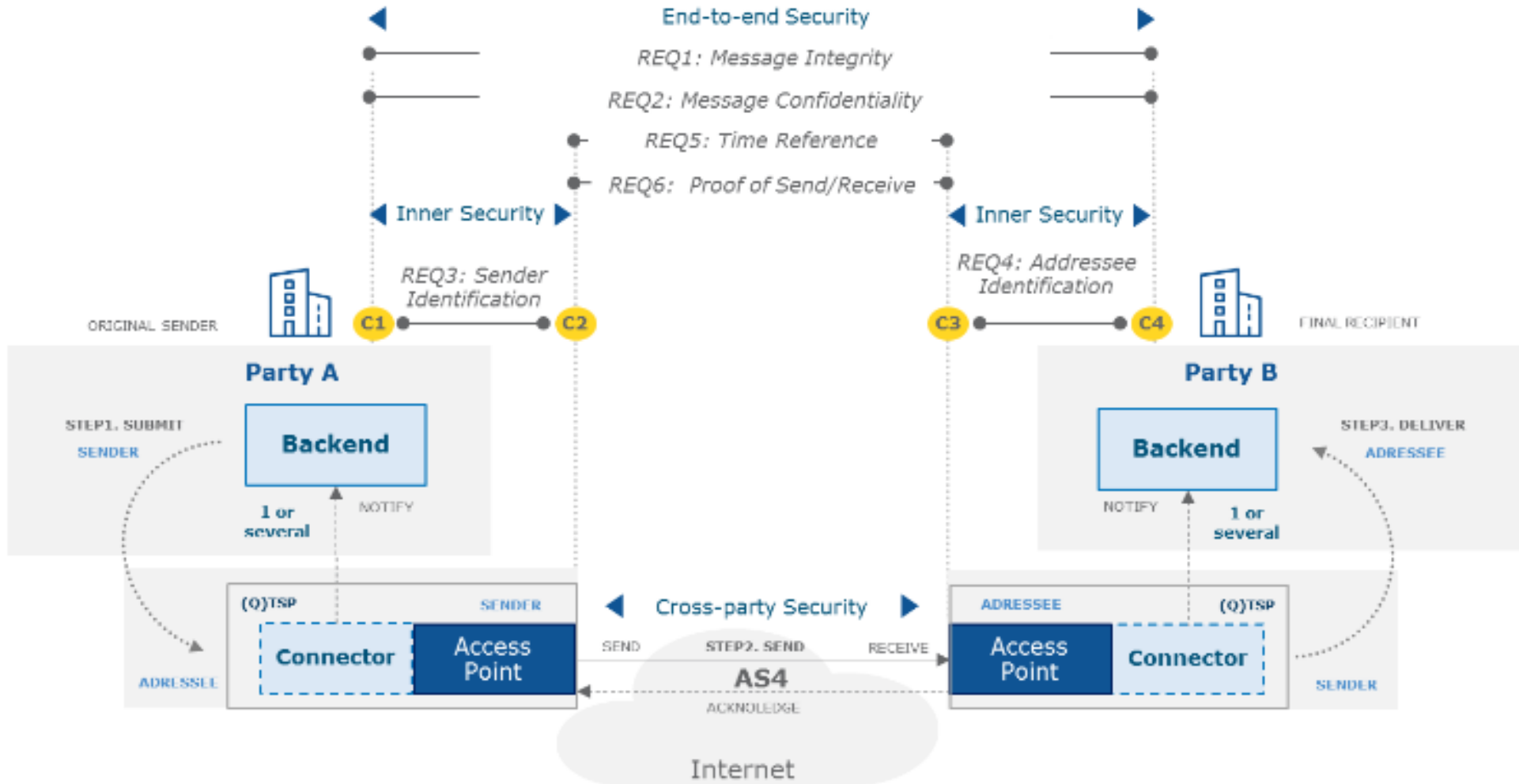


# eDelivery-Uitwisseling van documenten





# eDelivery Security







“De techniek is de inspanning om inspanning te besparen”

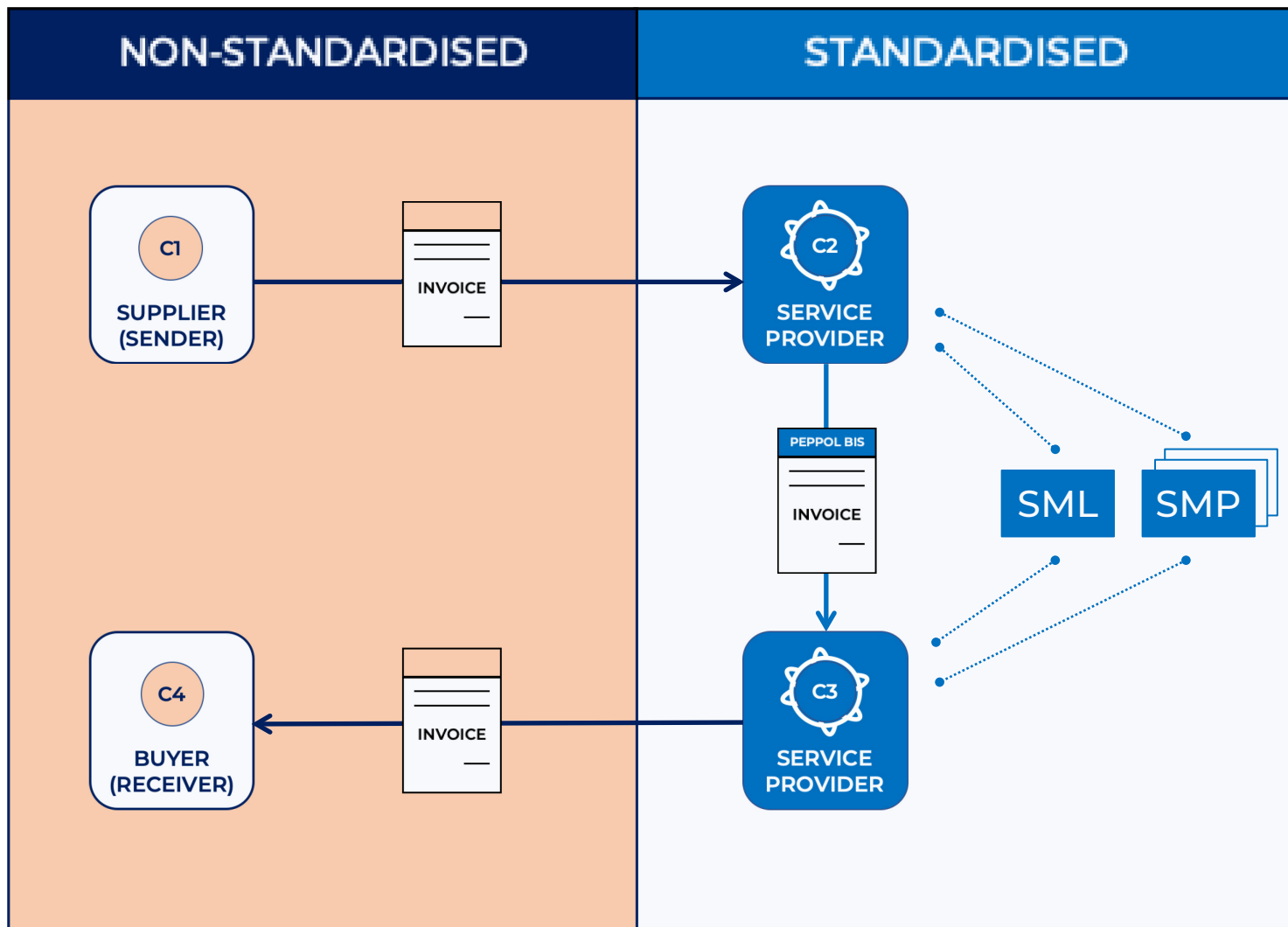
**JoseOrtegay Gasset**

Spaans schrijver en filosoof

Leefde van 1883-1955



# Peppol Network (4-corner model)



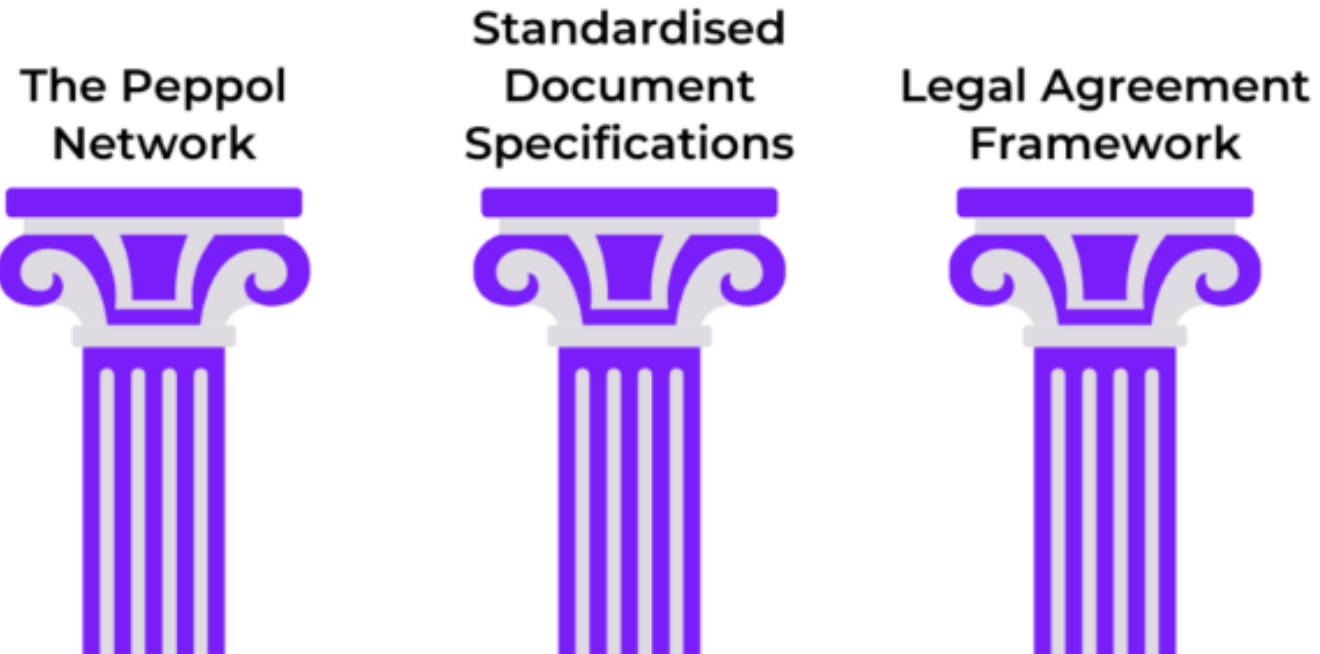
Providing interoperability using **Peppol** (based on ISO/IEC 19845 Universal Business Language (UBL) standards and the **Peppol Network** for the **reliable** and **secure exchange** of business documents

Peppol provides a **ready-to-use, scalable, both domestic and cross border**, four-corner model, utilising a market of private sector Service Providers that are connected to sending and receiving organisations (End Users)

Key to the model is a central address registry providing **dynamic discovery of participants** (Service Metadata Locator - SML), supported by centralised or distributed local capability look-up services (Service Metadata Provider - SMP)

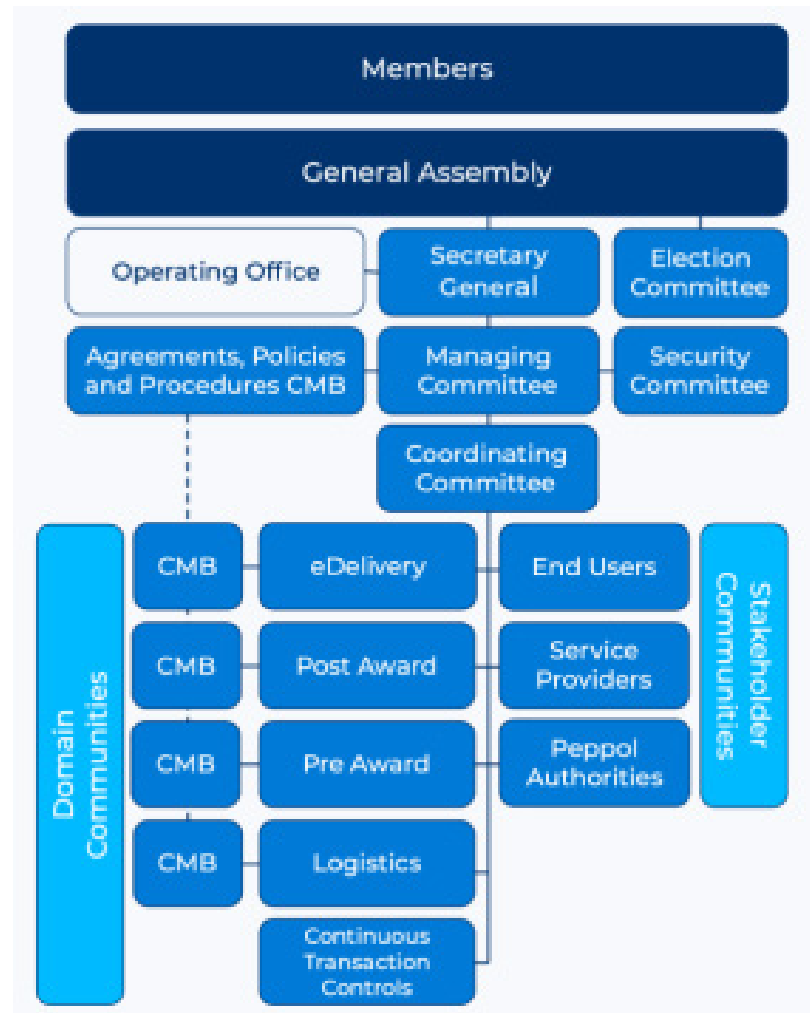


## Three Pillars of Peppol



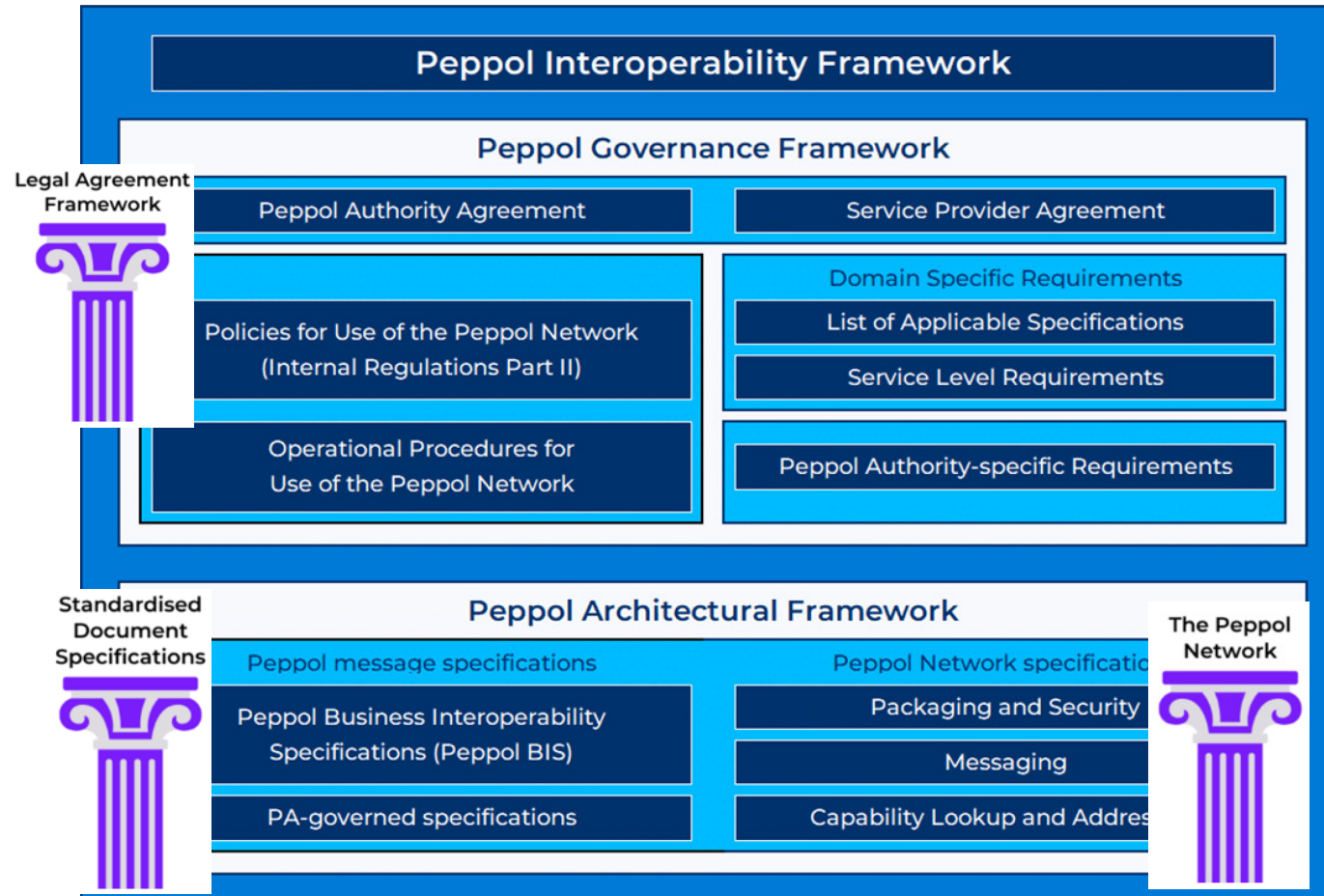


# Afsprakenstelsel als aanvulling eDeliverytechniek





# Afsprakenstelsel als aanvulling op deliverytechniek






# Forum





# Voor een veilig verbonden Nederland

## Contact

 088 041 60 00

 [info@rdi.nl](mailto:info@rdi.nl)

 [www.rdi.nl](http://www.rdi.nl)

## SocialMedia



[#wijzijnRDI](#)



# Benieuwd naar meer:

<https://ec.europa.eu/digitabuilding-blocks/sites/display/EDELCOMMUNITY/Webinar+on+eDelivery+value+proposition%3A+national+experiences.+16+January+2025>

DIGITAL EUROPE

**Event | Webinar on eDelivery value proposition.  
16 January 2025**

PASSION LED US HERE